

MD-DRONE

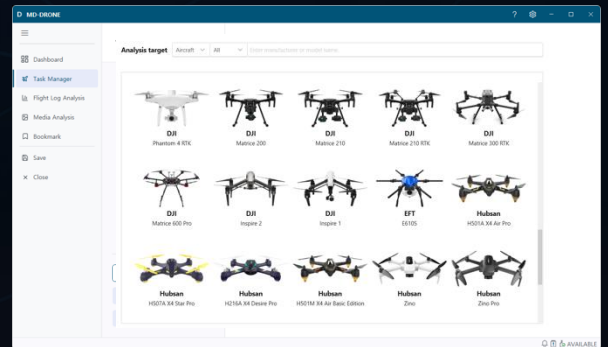
MD-DRONE is a forensic software designed to extract and analyze data from a wide range of UAV/Drone data sources. It supports multiple extraction methods across diverse models and delivers AI-powered analysis for advanced investigation of drone normal incidents and accidents.



Data Extraction

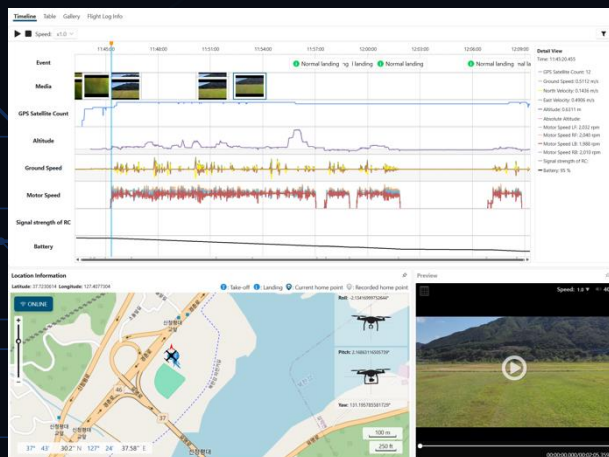
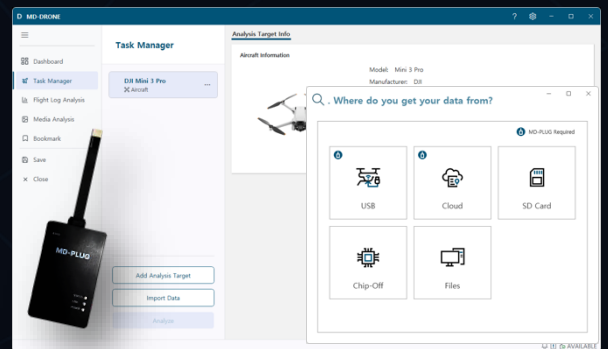
Multiple Extraction Methods

- **Logical & Physical:** Comprehensive data recovery from drone storage sources
- **Chip-off Extraction:** Direct memory chip analysis for damaged devices
- **Extraction Media:** USB connection, Wi-Fi interface and external memory card readers, MD-PLUG, MD-READER
- **MD-PLUG Integration:** Advanced extraction support for modern drone models



Data Source Support

- **Drone and Flight Controllers:** Broad model support with guided extraction workflows
- **Mobile Applications:** Extraction from Android drone apps and flight log data
- **Remote Controllers:** Direct data acquisition from RC devices
- **File Format support:** DAT, ULG, BIN, PUD, TXT, MDF, DRF, TLOG and SRT formats
- **DJI Integration:** DJI Assistant files and manufacturer-specific data



Flight Log Analysis

- **Integrated Analysis:** Flight log analysis across multiple targets
- **Multiple Visualizations:** Analyzed data presented in Timeline and Tabular views
- **Flight Parameters:** GPS coordinates, Speed, Altitude, Battery status and more
- **Map Visualization:** Flight path display with takeoff and landing points
- **In-built Media Viewer:** Multimedia previews synchronized with the timeline
- **Collision Analysis:** AI-based drone accident analysis

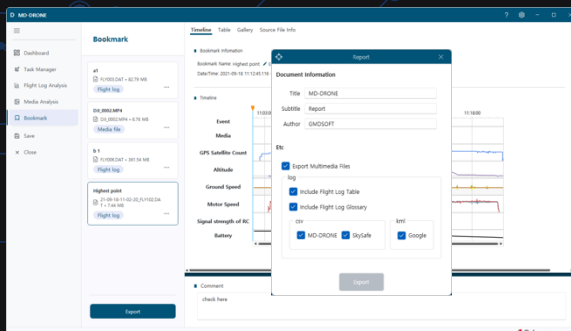
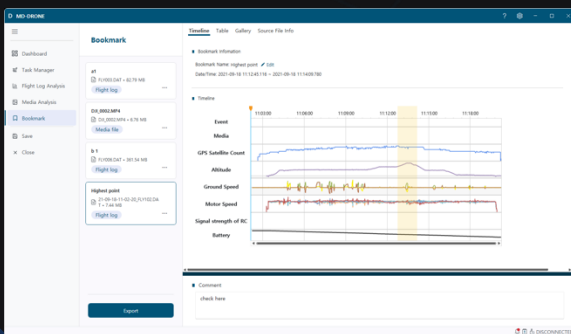
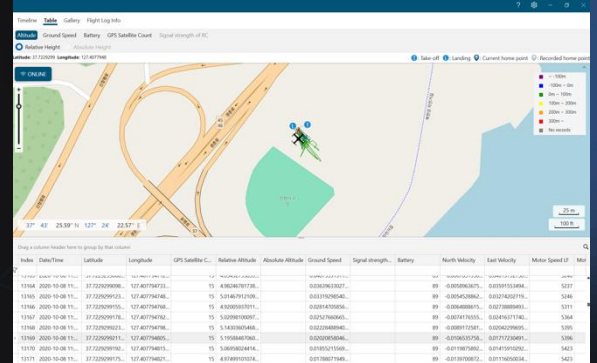
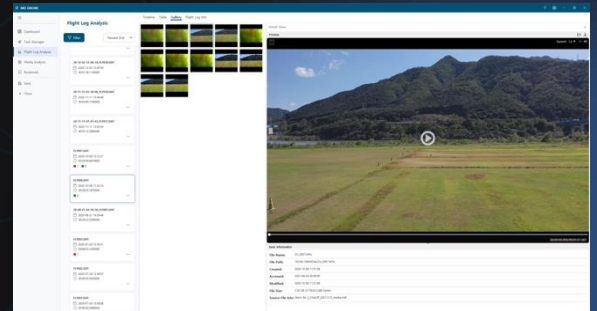
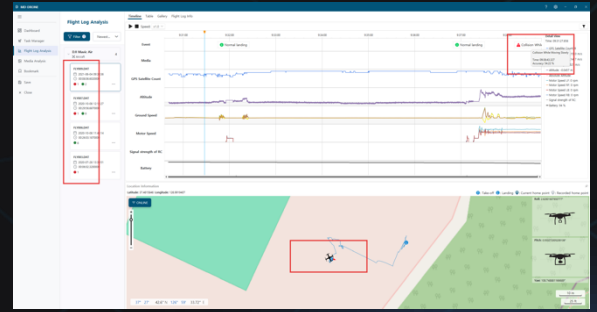
AI-Based Collision Analysis

Intelligent Event Detection

- **Collision Identification:** Automatic crash and impact events
- **Battery Analysis:** Power depletion and failure warnings
- **Abnormal Behavior:** Identification of unusual flight patterns and maneuvers
- **Landing Classification:** Detection of normal and abnormal landing events

Event Visualization

- **Multimedia Gallery:** Preview synchronized with corresponding flight logs and timeline
- **Color Coding:** Green (normal) and red (abnormal) event markers for quick identification
- **Events on Map:** Visualization of takeoff, landing, and other major events using color coded flight paths
- **Event Counting:** Statistical overview of normal and abnormal events per flight log
- **Confidence Indicators:** AI analysis accuracy ratings



Bookmarks and Reports

- **Flexible Selection:** Flight time ranges, specific images, and videos
- **Comment System:** Add investigative notes to bookmarked evidence
- **PDF Reports:** Generate professional forensics reports with bookmarked evidence
- **Data Export:** Export DAT files in CSV format and flight paths in KML for GIS integration
- **Video Generation:** Export animated flight path visualizations as video file
- **Media Preservation:** Preserve original multimedia files with complete metadata
- **Multi-language Support:** English, Bahasa Indonesia, Japanese, Vietnamese