

MD-NEXT

MD-NEXT is a forensic software for data extraction from diverse mobile and digital devices. It supports physical and logical extraction methods across various operating systems.



Device & OS Support

15,000+ Models Supported

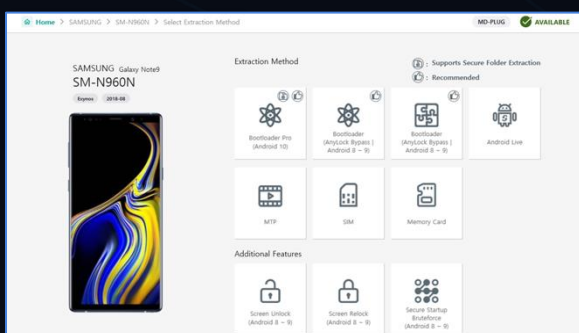
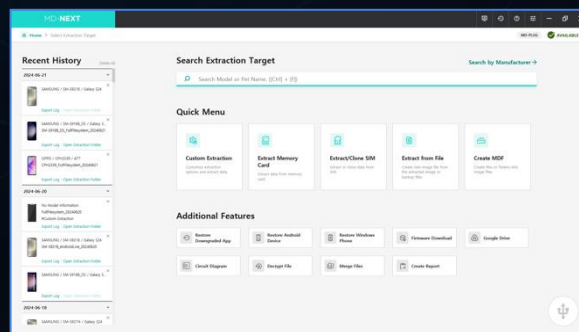
- Supports smartphones, feature phones, tablets, IoT devices, wearables, and embedded industrial PC boards

Universal Chipset Compatibility

- Extraction support for devices with all major chipsets, such as Qualcomm, Exynos, MediaTek, Apple, and UNISOC

Diverse mobile OS supported

- iOS, Android, Windows, Tizen OS, Kai OS, Bada OS



Powerful Extraction

Physical & Logical Extraction

- Supports various physical methods like Bootloader, ADB Pro, Custom Image, SD Card, USIM, JTAG, and Chip-off
- Unlocking of FDE enabled phones
- Brute-forcing of Secure Boot Startup
- Android/iOS FFS (Full Filesystem) extraction
- Android Logical Extraction – Android Live Pro (Keystore), Android Live (ADB Backup, Manufacturer backup, App backup, Extraction agent)
- iOS Logical Extraction – AFC, iOS backup
- MTP extraction, Tizen Live extraction

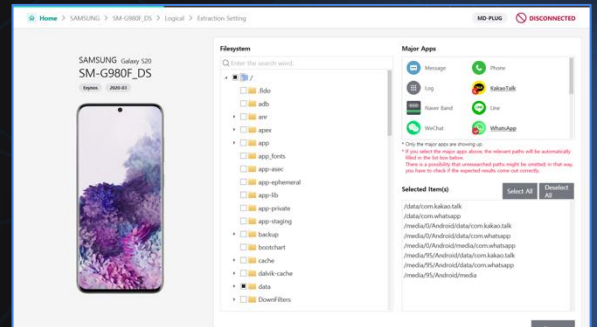
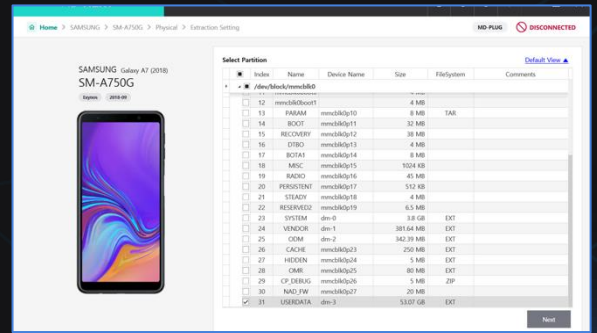
MD-PLUG: Advanced FFS Extraction

- Hardware for secure data extraction, including keystore
- Advanced FFS – Qualcomm, Exynos, MTK, and UNISOC chipset devices of FBE enabled
- Android Live Pro – Keystore extraction

MD-PLUG hardware for advanced extraction

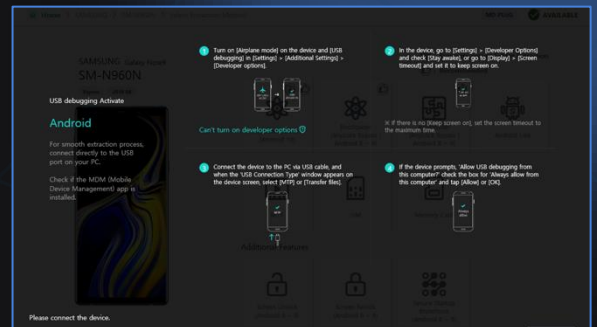
Extraction Utilities

- Provides utilities for resuming failed extractions and merging multiple image files
- Selective extraction by partition, by apps, and by folders
- Features smart automation for custom extraction and automatic partition decryption
- Restores firmware and downgraded apps
- Support for cloning SIM cards
- Support for automatic analysis with MD-RED after extraction



Intuitive User Interface

- Offers an easy-to-use graphical UI with clear guides and automatic device detection
- Displays real-time progress, estimated time, and extracted data size
- Includes a built-in Hex viewer for data preview



Saving & Reporting

- Saves extracted images in .bin file format, compatible with other analysis tools
- Ensures data integrity with write-protection
- Generates comprehensive reports in PDF, Excel, Word, and HTML formats
- Support for 10 hash algorithms for extracted files
- Generates extraction log files

