

# MD-PCM

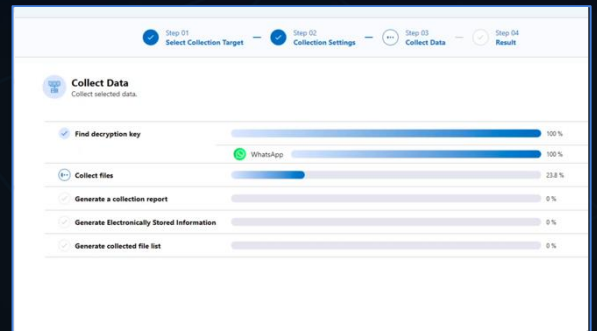
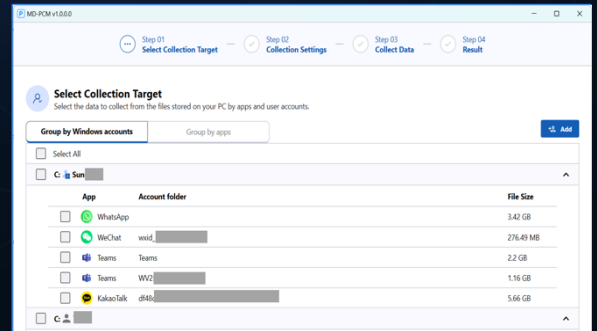
## PC Messenger Extraction Tool

MD-PCM is a new digital forensic software designed to collect desktop messaging data from Windows and macOS computers.



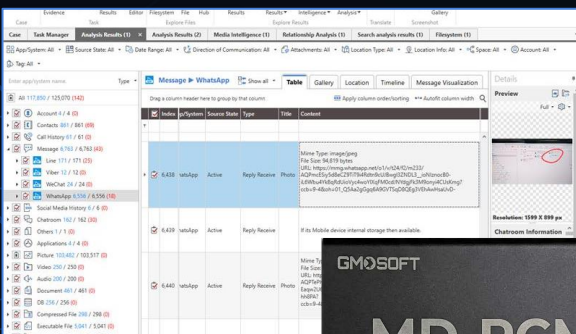
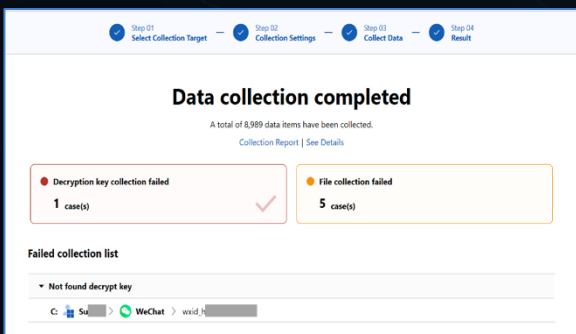
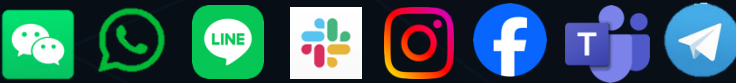
### Feature Highlights

- **Focused Extraction:** Collects only relevant target data, including decryption credentials
- **Portable Execution:** Operates entirely from external SSD without installation and remains nothing in evidence
- **Intelligent Auto-Detection:** Detects installed messenger applications, and accounts automatically
- **Multi-Source Support:** Windows, macOS, and forensic images (E01, DD)



### Supported Applications

- Major desktop messaging apps:



### Data Processing & Analysis

- Decrypts encrypted messenger data
- Supports advanced data analysis in MD-RED
- Visualized data in chat dialogue and in relationship view
- Cross-platform communications analysis across mobile, cloud, and desktop messaging data

### Use Cases

- Cases where a mobile app has been deleted, but residual data remains on the PC system
- Organized crime investigations involving multiple devices and accounts
- Audits or eDiscovery cases involving corporate desktops



\*Portable SSD with the software and license embedded